

# WHITTEMORE SHERRILL LTD™

2024 SUPPLEMENT 3





# WHITTEMORE SHERRILL LTD.™

Since 1945, Sherrill has selected the finest leather hides to bring to life handmade originals using time-honored techniques passed down from generation to generation by skilled North Carolina furniture makers.

Whittemore Sherrill LTD carries on this tradition by pairing the finest leather hides from around the world with the highest quality American-made, 8-way tied frames. The Whittemore Sherrill team tailors each piece to your exact specifications in our North Carolina workshops. The result? Unparalleled value in custom-made leather upholstery designed to fit your client's style.





322-03 SOFA  
MH18361 LITTLE GUSTAVE CHEST

# WHITTEMORE SHERRILL LTD.™



## Additional Styles

Looking for a matching item? This icon indicates multiple items are available in a style. Coordinated looks are offered for both wood and upholstery collections.



## Finish Options

Let your imagination run wild with our hand applied Custom Finish program. You can even mix and match finish combinations. The opportunities are endless.



## Nailhead Trim

Nail trim options are available on many items, so you can pair the perfect nailhead to customize your piece.



## Fabric Options

This icon points out frames covered in our luxurious leathers that can also be covered in our high quality fabrics.



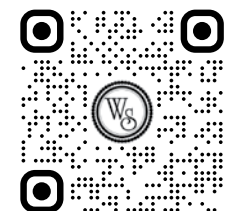
## Swivel Option

A swivel base adds extra functionality to any room in your home allowing more sitting, viewing and interaction opportunities.



## Swivel Rocker

Select seating styles offer optional swivel/rocker motion with full 360° smooth swivel turning ability.





# CHAIRS



### 104-01 Chair

35w 34d 37h  
Inside: 26w 21d 23h  
Arm Height: 25 Seat Height: 17  
Tight Back  
Finish Shown: Carob Brown



### 108-01 Chair

35w 34d 37h  
Inside: 26w 21d 23h  
Arm Height: 25 Seat Height: 17  
Tight Back  
Finish Shown: Carob Brown



### 126-01 Chair

30w 35d 35h  
Inside: 23w 18d 16h  
Arm Height: 23 Seat Height: 18  
Tight Back  
Available in Natural on Walnut Only

**Note:** Shown On Front Cover



### 1216-01 Wing Chair

29w 36d 45h  
Inside: 22w 21d 22h  
Arm Height: 25 Seat Height: 21  
Tight Back  
Finish Shown: Carob Brown



1216-01 WING CHAIR





**1221-01 Chair**

29w 35d 33h  
 Inside: 21w 22d 11h  
 Arm Height: 24 Seat Height: 19  
 Tight Back  
 Standard Nail: #4-FN As Shown  
 Finish Shown: Carob Brown



**L1750-1 Chair**

29w 38d 37h  
 Inside: 20w 22d 18h  
 Arm Height: 24 Seat Height: 19  
 Semi-Attached Boxed Back  
 Standard Nail: #1-FN  
 Standard With Recessed Wood Leg



**L2341 Chair**

42w 40d 38h  
 Inside: 26w 23d 17h  
 Arm Height: 25 Seat Height: 20  
 Loose Pillow Back  
 Finish Shown: Carob Brown



Also Available:

**L2340 Ottoman**

35w 19d 19h



**1815-01 Chair**

33w 37d 36h  
 Inside: 23w 23d 17h  
 Arm Height: 25 Seat Height: 19  
 Tight Back  
 Finish Shown: Carob Brown



**1849-01 Chair**

35w 39d 36h  
 Inside: 23w 22d 16h  
 Arm Height: 25 Seat Height: 18  
 Tight Back  
 Standard Nail: #1-FN & #3-FN As Shown  
 Finish Shown: Carob Brown



**L5990 Storage Bench**

56w 23d 22h  
 Standard Nail: #1-FN





## OTTOMANS

### 6048-00 Storage Ottoman

41w 41d 19h  
Inside: 19h  
Standard Nail: #3-FN As Shown  
Standard With Recessed Wood Feet



Also Available:

### 6049 Ottoman (No Storage)

41w 41d 19h  
Standard Nail: #3-FN Spaced



### 8718-00 Storage Ottoman

50w 26d 19h  
Standard Nail: #1-FN  
Finish Shown: Carob Brown



### 8776-00 Ottoman

24w 24d 16h  
Inside: 16h  
Standard Nail: #3-FN As Shown  
Standard With Simulated Horse Hooves



8718-00 STORAGE OTTOMAN



6048-00 STORAGE OTTOMAN



**L6 SERIES**



**L61-LZ 6 Series  
Left Arm Chaise**

48w 73d 36h  
Inside: 39w 54d 19h  
Arm Height: 25 Seat Height: 17  
Loose Pillow Back  
Finish Shown: Carob Brown



**L61-AL 6 Series  
Armless Loveseat**

60w 41d 36h  
Inside: 60w 23d 19h  
Seat Height: 17  
Loose Pillow Back  
Finish Shown: Carob Brown



**L61-RZ 6 Series  
Right Arm Chaise**

48w 73d 36h  
Inside: 39w 54d 19h  
Arm Height: 25 Seat Height: 17  
Loose Pillow Back  
Finish Shown: Carob Brown



**L63-LZ 6 Series  
Left Arm Chaise**

48w 73d 36h  
Inside: 39w 54d 19h  
Arm Height: 25 Seat Height: 17  
Loose Pillow Back  
Finish Shown: Carob Brown



**L63-AL 6 Series  
Armless Loveseat**

60w 41d 36h  
Inside: 60w 23d 19h  
Seat Height: 17  
Loose Pillow Back  
Finish Shown: Carob Brown



**L63-RZ 6 Series  
Right Arm Chaise**

48w 73d 36h  
Inside: 39w 54d 19h  
Arm Height: 25 Seat Height: 17  
Loose Pillow Back  
Finish Shown: Carob Brown



**L62-LZ 6 Series  
Left Arm Chaise**

48w 73d 36h  
Inside: 39w 54d 19h  
Arm Height: 25 Seat Height: 17  
Loose Pillow Back  
Finish Shown: Carob Brown



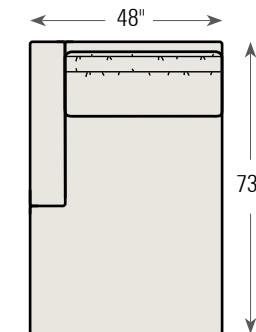
**L62-AL 6 Series  
Armless Loveseat**

60w 41d 36h  
Inside: 60w 23d 19h  
Seat Height: 17  
Loose Pillow Back  
Finish Shown: Carob Brown

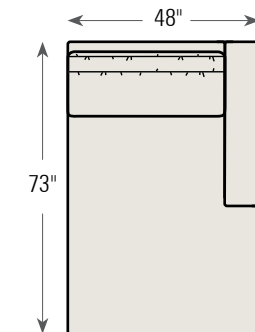


**L62-RZ 6 Series  
Right Arm Chaise**

48w 73d 36h  
Inside: 39w 54d 19h  
Arm Height: 25 Seat Height: 17  
Loose Pillow Back  
Finish Shown: Carob Brown



**L6\_-LZ 6 Series  
Left Arm Chaise**



**L6\_-RZ 6 Series  
Right Arm Chaise**



SEE ADDITIONAL  
LEATHER 6 SERIES  
SECTIONAL STYLES

Scale 1/4" = Approx. 1'





1815-01 CHAIR  
1815-03 SOFA



**1278-03 Sofa**

76w 39d 35H  
Inside: 64w 23d 15H  
Arm Height: 26 Seat Height: 20  
Tufted Back  
Standard Nail: #1-FN  
Finish Shown: Carob Brown

**Note:** Shown On Back Cover



**1815-03 Sofa**

82w 37d 36H  
Inside: 72w 23d 17H  
Arm Height: 25 Seat Height: 19  
Tight Back  
Finish Shown: Carob Brown



**L2344 Sofa**

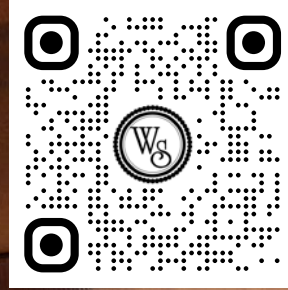
95w 40d 38H  
Inside: 78w 23d 17H  
Arm Height: 25 Seat Height: 20  
Loose Pillow Back  
Finish Shown: Carob Brown





# SHERRILL LEATHER HAND PAINTED COLLECTION

Hand Painting on Other Styles Available by Request



## "Stampede" Leather Hand Painting Pricing (3 Image Set)

Available around the Outside Roll or Base (OA & OB).

Only available on the 1820 Series in Diablo Desert and Curated Caramel Truffle Leathers.



## Moosehead, Horn and Etched Elk (3 Image Set)

Only available on the 108-01 and 104-01 Chairs in Diablo Desert or Curated Caramel Truffle Leathers.



## Alpine Skiers (3 Image Set)



Only available on the 1221-01 chair in Diablo Desert or Curated Caramel Truffle Leathers.



## Elk Heaven (3 Image Set)



Only available on the 1221-01 Chair in Diablo Desert or Curated Caramel Truffle Leathers.



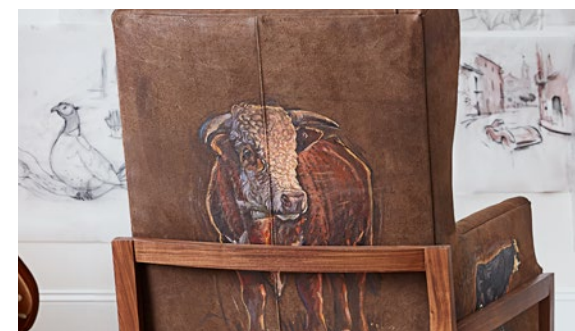
## Tommy Targa (3 Image Set)



Only available on the 1221-01 Chair in Diablo Desert or Curated Caramel Truffle Leathers.



## S&S Ranch (3 Image Set)



Only available on the 1650 Chair in Outlaw Chocolate.





1820-03 SOFAS WITH STAMPEDE HAND PAINTING  
964-108 ACCENT TABLE



417-01 CHAIR WITH 9" LEATHER BULLION  
AROUND OUT-ARM AND OUT-BACK





**VISUAL INDEX**



**104-01 Chair**  
35w 34d 37h  
Page 6



**108-01 Chair**  
35w 34d 37h  
Page 6



**1216-01 Wing Chair**  
29w 36d 45h  
Page 6



**1221-01 Chair**  
29w 35d 33h  
Page 8



**126-01 Chair**  
30w 35d 35h  
Page 6



**1278-03 Sofa**  
76w 39d 35h  
Page 15



**1815-01 Chair**  
33w 37d 36h  
Page 8



**1815-03 Sofa**  
82w 37d 36h  
Page 15



**1849-01 Chair**  
35w 39d 36h  
Page 8



**6048-00 Storage Ottoman**  
41w 41d 19h  
Page 10



**8718-00 Storage Ottoman**  
50w 26d 19h  
Page 10



**8776-00 Ottoman**  
24w 24d 16h  
Page 10



**L1750-1 Chair**  
29w 38d 37h  
Page 8



**L2341 Chair**  
42w 40d 38h  
Page 9



**L2344 Sofa**  
95w 40d 38h  
Page 15



**L5990 Storage Bench**  
56w 23d 22h  
Page 9

**VISUAL INDEX**



**L61 Sectional**  
Page 12



**L62 Sectional**  
Page 12



**L63 Sectional**  
Page 13

**INDEX BY NUMBER**

104-01 Chair ..... Page 6  
 108-01 Chair..... Page 6  
 1216-01 Wing Chair..... Page 6  
 1221-01 Chair..... Page 8  
 126-01 Chair..... Page 6  
 1278-03 Sofa ..... Page 11  
 1815-01 Chair..... Page 8  
 1815-03 Sofa ..... Page 11  
 1849-01 Chair ..... Page 8  
 6048-00 Storage Ottoman.....Page 14  
 8718-00 Storage Ottoman .....Page 14  
 8776-00 Ottoman.....Page 14  
 L1750-1 Chair ..... Page 8  
 L2341 Chair..... Page 9  
 L2344 Sofa ..... Page 11  
 L5990 Storage Bench ..... Page 9  
 L61 Sectional ..... Page 12  
 L62 Sectional ..... Page 12  
 L63 Sectional ..... Page 13



**THE SAUVAGE LEATHER COLLECTION**

Offered in 14 different colors, SAUVAGE is a full grain aniline leather using English hides tanned in a historic region of Italy known for leather producing. Sauvage offers a remarkable suppleness with an exquisite hand-applied finish.



## PRODUCT DESCRIPTION KEY

|   |   |   |
|---|---|---|
| Style Number                                  | _____○ <b>W10-01 Chair</b> ○_____   | Style Name<br>Description                     |
| Dimensions (inches)                           | _____○ 31w 35d 36h ○_____   | Dimensions (inches)                           |
| Dimensions (inches)                           | _____○ Arm Height: 25 Seat Height: 19 ○_____  | Dimensions (inches)                           |
| Dimensions (inches)                           | _____○ Inside Seat Depth: 22 ○_____   | Dimensions (inches)                           |
| Product Details                               | _____○ Finish Shown: Brown Mahogany ○_____  | Product Details                               |
| Symbol Icons<br><small>*See Key Below</small> | _____○    ○_____ | Symbol Icons<br><small>*See Key Below</small> |

## SYMBOL KEY



Additional Styles



Finish Options



Fabric Options



Nailhead Trim



Swivel Option

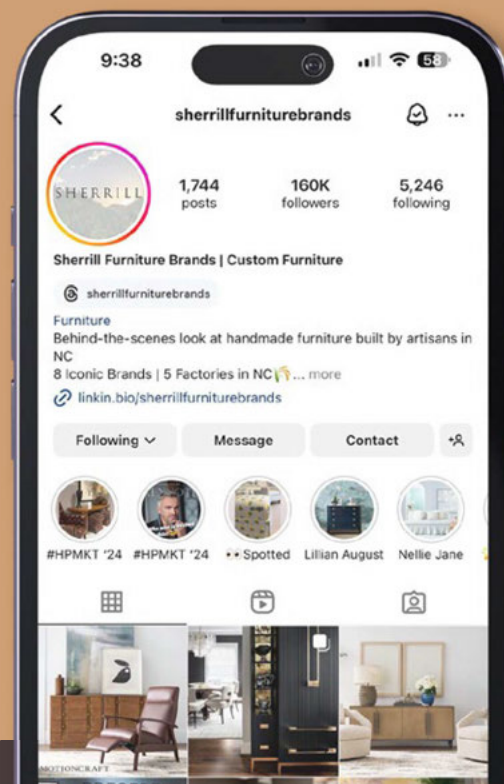


Swivel Rocker

To Stay Up To Date  
On All Things  
Sherrill Furniture,  
Follow Us On  
Instagram!



@SherrillFurnitureBrands

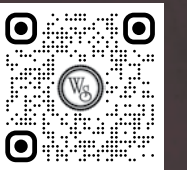


WHITTEMORE  
SHERRILL LTD.

Available Now

LEATHER

96/9700 Series



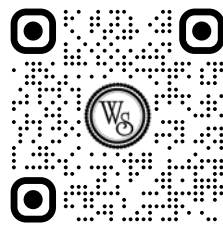




1278-03 SOFA

# WHITTEMORE SHERRILL LTD.™

2024 SUPPLEMENT 3



[WHITTEMORESHERRILL.COM](http://WHITTEMORESHERRILL.COM)

2405 Highland Ave NE • Hickory, NC 28601 • (828) 322-2640 • Fax (828) 324-8207